

## SYP Bi-Annual Performance Report for Overview and Scrutiny

July 2014

### PERFORMANCE REPORT ON COMMUNITY SAFETY PLAN 2011-14

#### 1. Introduction and Overview

1.1. The report will be presented in a form in line with the Community Safety Plan 2011-14 which has the following priorities;

- Acquisitive Crime
- Business Crime
- Anti-Social Behaviour
- Re-offending Information
- Violent Crime
- Other Indicators

#### York - All Crime (from IQUANTA)

##### Totals

Target 2013-14

13756

Forecast

11380

Cumulative

11380

Target Monthly Total

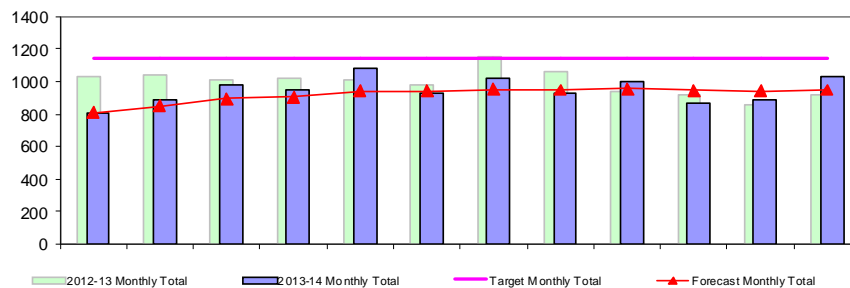
1146.3

Previous Years

2007-08	18924
2008-09	17886
2009-10	14480
2010-11	15199
2011-12	13576
2012-13	11928

Milestone Targets

2013-14	13756
---------	-------



The Graph shows:

- 1) Target level 2013-2014 (Strategy end not the Yearly milestones)
- 2) Forecasted annual total based upon a moving average of months

(There has been no allowance for known seasonal patterns)

Key:

- Action Needed (>120%)
- Caution (100% - 120%)
- No Action (<100%)



Month	2013-14	2012-13	2011-12	2010-11	2009-10
Apr	811	1026	1157	1264	NA
May	887	1042	1151	1370	NA
Jun	980	1007	1177	1323	NA
Jul	951	1020	1177	1269	NA
Aug	1077	1006	1069	1331	NA
Sep	933	983	1001	1320	NA
Oct	1025	1148	1205	1346	NA
Nov	931	1063	1138	1320	NA
Dec	1003	940	1261	923	NA
Jan	865	922	1129	1171	1008
Feb	886	853	966	1207	1066
Mar	1031	918	1145	1355	1084

1.2. Year end results from Iquanta for 2013-14 have now been published which show that the level of reported crime fell by 550 crimes over the past 12 months. This equates to a 5% reduction in total crime on the previous year.

1.3. All crimes have met the targets set for 2013/14 except shoplifting (5% above target) and robbery of a business property (157% above target 22 crimes).

1.4. York is currently in 10<sup>th</sup> place within its Iquanta crime family of 15 local authorities.

## 2. Violent Crime

2.1. The level of violent crime in 2013-14 was 1938 crimes. This was 316 less crimes (14% Change) than the previous year, 774 less crimes (29% Change) than strategy inception and 638 less crimes (25% Change) than targets agreed.

2.2. York is currently in 8<sup>th</sup> place within its IQUANTA family for violent crime. The long-term pattern is for stable family positions whereby York has moved between 9 and 11<sup>th</sup> place. Members of York's Iquanta family are:

Cheshire - Cheshire East	Hertfordshire - Welwyn & Hatfield
Cheshire - Cheshire West	Kent - Canterbury
Devon & Cornwall - Exeter	Kent - Maidstone
Essex - Brentwood	Kent - Tunbridge Wells
Essex - Colchester	Lancashire - Fylde
Greater Manchester - Trafford	Metropolitan Police - Hillingdon
Hertfordshire - Hertsmere	Wiltshire - Swindon

2.3. **Alcohol Diversion Programme:** The Alcohol Diversion Programme began taking referrals on Monday 19<sup>th</sup> May. The first course will run on Monday 2<sup>nd</sup> June, 6-9pm. The programme is being delivered by Lifeline with capacity for 10-15 people on each course.

2.4. Those who are arrested for drunk and disorderly type offences (criminal, damage, street urination, anti-social behaviour) will be offered the option of attending the course and the charge cancelled. They will be expected to contact Lifeline to book onto the course within 15 days of arrest as part of the bail process.

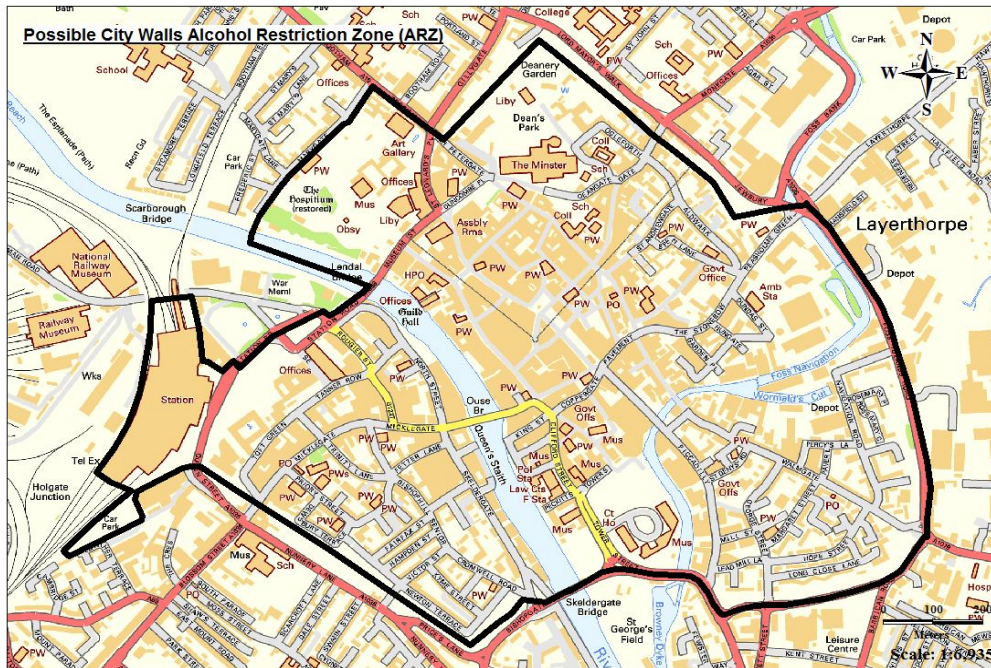
2.5. The programme is aimed at non-alcohol dependent individuals, but referrals will also be encouraged for those who are alcohol dependent who will be referred into other more appropriate treatment programmes offered by Lifeline.

2.6. British Transport Police have been allocated 5 referrals a month, aimed at targeting those who cause problems either on trains or in the railway station. Non-York residents will also be expected to attend the programme in York.

2.7. The programme is one of 5 throughout the country, each addressing different themes. The York programme will encourage people to reflect mainly on their behaviour and personal responsibility and the choices they choose to make, rather than on alcohol issues alone.

2.8. The programme is being evaluated by the University of York with initial findings reported after 6 months of the programme being up and running.

2.9. The ARZ for the city centre went live on the 31<sup>st</sup> March 2014 and initial feed-back has been good with the powers been enacted several times on the first few days of operation.



- 2.10. The altered and increased CIZ for the city centre was passed by full council at the end of March. This legislation will potentially be used in the 5 applications that have recently been received for licensed premises within the increased CIZ area.
- 2.11. **Static Ambulance Unit:** The static ambulance unit deployment in St. Helen's Square on Friday and Saturday nights is due to commence officially on Friday 6th June. The ambulance unit will be on site from 7pm until 4am.
- 2.12. The Unit is not a Rest and Recovery Centre. Over 90% of patients are discharged from a similar unit in Leeds, the majority having suffered minor injuries, usually as a result of falls due to excess alcohol. Those seriously in drink will continue to be referred to York Hospital Emergency department.
- 2.13. Those who may need somewhere to rest, have some water or a warm drink can also be referred to the Street Angels Night bus on Saturday evenings which will be parked adjacent.
- 2.14. A meeting has been arranged between Yorkshire Ambulance Service and the Street Angels to coordinate joint working on Saturday nights when the new Street Angels night bus will be deployed alongside. Monitoring information will be collected by Yorkshire Ambulance Service staff, including in which venue patients took their last drink. The Street Angels have reported a much improved response since relocating to St. Helen's Square.

- 2.15. **River Safety Working Group:** A River Safety Working Group has been convened as a sub-group of AVANTE in the light of the recent river deaths.
- 2.16. Membership of the group includes: North Yorkshire Police, North Yorkshire Fire and Rescue Service, CYC CCTV, University of York, University of York St. John, APEX Radio Systems Ltd, OPCC.
- 2.17. **River Safety Statistics:** Between 1999 and April 2014 there have been 24 deaths connected to rivers within the York district. Of the 24 deaths that have occurred 10 of them went into the River Ouse in York and 14 of them went into the River Foss in York.
- 2.18. Of these 10 deaths connected to the River Ouse, 4 of them did not enter the river in the City Centre and 6 of them did enter the river in the City Centre.
- 2.19. Of these 6 deaths that were within the city centre connected to the River Ouse; 2 are believed to have entered the river accidentally; 2 are believed to have committed suicide and 2 climbed barriers to jump in and drowned accidentally.
- 2.20. Between May 2013 and April 2014 there were approximately 35 other reported incidents to North Yorkshire Police that were connected to the river that involved some form of possible harm. This figure is likely to be an underestimate due to difficulties in data retrieval and classification. The following are known about these incidents;
- o 4 incidents involving falls in to the river;
  - o 20 incidents involving swimming in the river;
  - o 11 incidents involving threatening to jump in the river;
  - o Approx 1/3<sup>rd</sup> of incidents involved people under the age of 18;
  - o There is no significant pattern by hour of the day;
  - o Incidents are reported all year round but peak in July / August;
  - o Reported incidents are mainly on the Ouse river;
  - o Reported incidents are at many different locations on the river, with key locations being Lendal Bridge and Scarborough Bridge.

Description	Age Range	Bishopthorpe Bridge	Clifton Bridge	Kings Staith	Landing Lane	Lendal Bridge	Link Road Huntington	Millennium Bridge	Naburn	New Walk	Ouse bridge	Scarborough Bridge	Terry Avenue	Grand Total
Falls in River	Adult									1		2		3
	Youth				1									1
Swimming in River	Adult	2		1		5	1				1	1		11
	Youth		1			2		2	1			2	1	9
Threatening to Jump	Adult					10								10
	Youth		1											1
Grand Total		2	2	1	1	17	1	2	1	1	1	5	1	35

2.21. **Night-safe Radio:** 70 evening venues now carry the new Night-safe radio, provided by APEX Radio Systems Ltd. In addition, radios are carried by the following agencies:

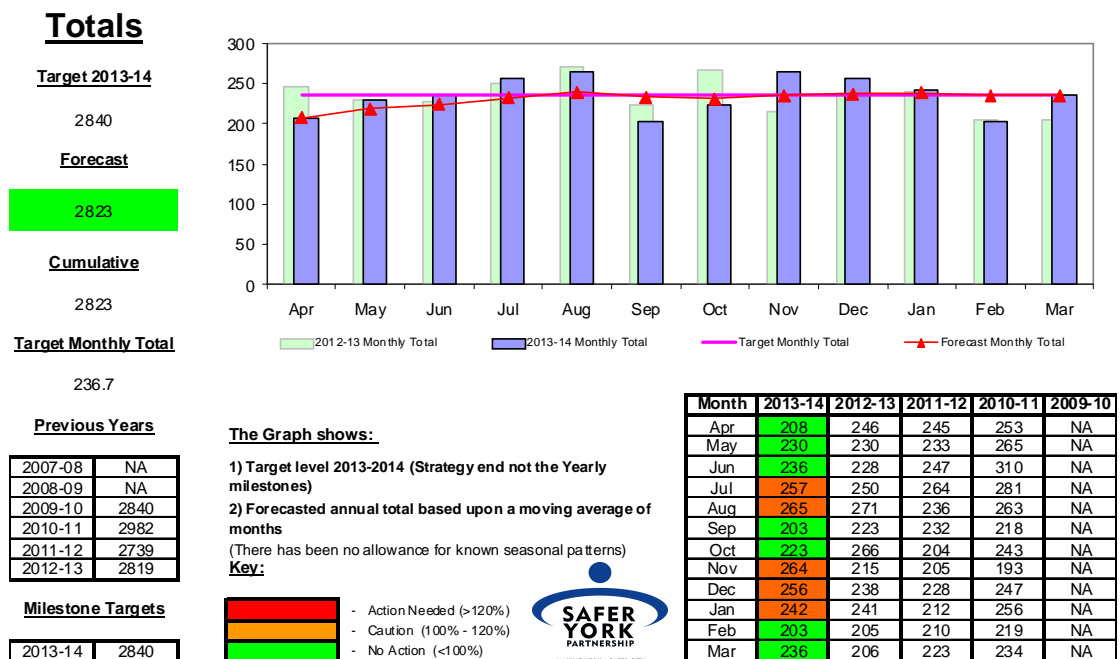
- North Yorkshire Police
- Street Angels (2 handheld / 1 held in the night Bus)
- Yorkshire Ambulance Service
- CYC Licensing
- NYP Licensing
- ASB Hub
- City Centre Enforcement Team
- British Transport Police
- Minster Police
- YUSU Night-safe scheme
- CYC CCTV Control Room.

2.22. We have received very positive feedback regarding the improved quality of the new radios. The Nightsafe Radio scheme is delivered by York Business Against Crime (YBAC) but is monitored via AVANTE.

2.23. **University of York Student Union Nightsafe scheme and ambulance unit deployment:** The University of York Students' Union have developed their own 'Street Angels' programme due to be launched in Freshers' Week. They have provisionally called this scheme 'Nightsafe'. They have received applications from over 100 would-be volunteers to date. Please see recent Press Release below:

2.24. The scheme is called 'Night Safe', and will provide help and support to students (and others) in vulnerable situations at night in town. The idea is to provide a friendly, non-judgemental face that people can turn to for assistance. The service is similar to the 'Street Angels' scheme that already operates in town on Friday and Saturday nights.

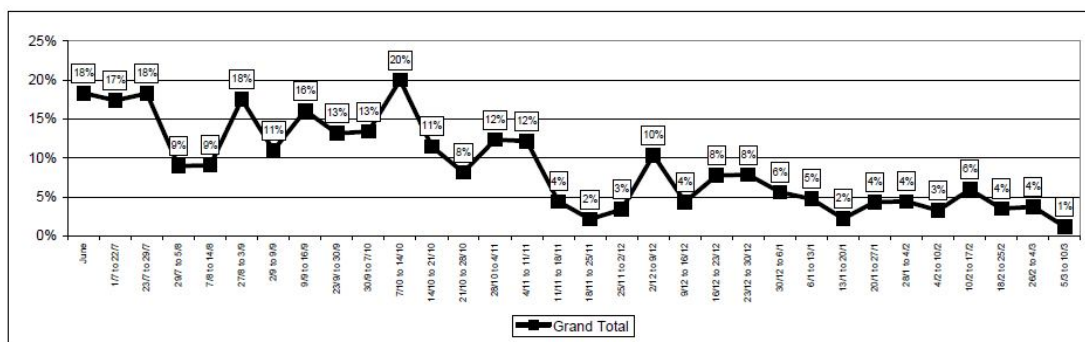
**York - Domestic Violence Incidents**



2.25. The level of Domestic Violence Incidents in 2013-14 was 4 more incidents (0% Change) than the previous year, 17 less incidents (1%

Change) than strategy inception and 17 less incidents (1% Change) than targets agreed.

2.26. The North Yorkshire Police Dip sample of 253 incidents has now concluded. This has had a significant effect on improving the data quality of domestic incidents over the last nine months. The table below shows that data quality has improved from around 18% of records misclassified to 1%.



2.27. York is currently developing a Domestic Abuse strategy through the Domestic Violence Strategy Group. Jane Mowat and Jo Beilby are leading on this for Safer York.

2.28. York received White Ribbon Status in May.

Key Statistics	2013/14 Financial Year												Running Total
	Apr	May	Jun	Jul	Aug	Sep	Oct	Nov	Dec	Jan	Feb	Mar	
Total Domestic Incidents	208	230	236	257	265	203	223	264	256	242	203	236	2823
Change on Previous Month													
Repeat Incidents	43	59	54	46	66	74	102	107	91	94	79	92	907
% Repeats	21%	26%	23%	18%	25%	36%	46%	41%	36%	39%	39%	39%	32%
Incidents involving Arrest	50	53	61	44	58	45	55	57	54	60	51	57	645
% Involving Arrest	24%	23%	26%	17%	22%	22%	25%	22%	21%	25%	25%	24%	23%
Incidents Crimed	55	67	71	63	80	45	63	69	67	73	69	65	787
% Crimed	26%	29%	30%	25%	30%	22%	28%	26%	26%	30%	34%	28%	28%
Incidents with Children Present	30	35	41	48	42	35	42	57	48	45	37	56	516
% with Children Present	14%	15%	17%	19%	16%	17%	19%	22%	19%	19%	18%	24%	18%

2.29. There has been an Expect respect input at the CSE / DV training for schools and professionals working with children and Young People.

2.30. There is a planned Expect Respect input with York SGCB for Child protection leads in schools in June. 19 schools so far and have requested DV information.

2.31. World cup ACPO plan is being looked at by the Scarborough domestic violence co-ordinator. A victim is currently attending Police briefings at the request of Supt Cain in order to provide knowledge in to this plan. IDAS have put together a briefing around safety planning for officers.

2.32. Update on the Domestic Violence Disclosure Scheme. Since the law was implemented 10 requests for information for York have been received. The turnaround is 35 days from request to disclosure 6 are pending , 1 disclosure and 3 no disclosures.

#### **York Domestic Incidents by Age grouping**

Grouping	2010-11	2011-12	2012-13	2013-14	Grand Total
Under 18	1.4%	2.0%	0.9%	2.4%	1.6%
18 - 19	5.3%	4.8%	4.8%	5.1%	5.0%
20 - 24	18.6%	18.1%	17.6%	17.1%	17.9%
25 - 29	15.5%	15.4%	16.8%	16.4%	15.9%
30 - 34	11.4%	12.3%	12.2%	13.4%	12.3%
35 - 39	12.0%	13.8%	12.7%	12.5%	12.8%
40 - 44	13.9%	11.6%	11.7%	9.8%	11.9%
45 - 49	9.6%	10.3%	9.9%	10.4%	10.1%
50 - 54	5.2%	5.4%	5.4%	5.5%	5.3%
55 - 59	3.0%	2.4%	3.3%	3.2%	2.9%
60 - 64	1.5%	1.8%	1.7%	1.5%	1.6%
65 - 69	1.0%	0.7%	1.5%	1.0%	1.0%
70 +	1.6%	1.3%	1.6%	1.7%	1.5%
Grand Total	100.0%	100.0%	100.0%	100.0%	100.0%

2.33. Permission granted to use the Young Persons risk assessment by CAADA and this will be used by Police following consultation YOT are now using the Young persons risk assessment.

2.34. Making Safe and MARAC protocols updated.

2.35. There has not been a domestic violence murder recorded in York since 2008-09 to date.

Indicator	Type	2008/09	2009/10	2010/11	2011/12	2012/13	2013/14
NI 34 Domestic Violence Murder	Target	0	0	0	0	0	0
	Outturn	0	0	0	0	0	0

### **3. Anti-Social Behaviour**

3.1. The level of criminal damage in 2013-14 was 1632 crimes. This was 198 less crimes (11% Change) than the previous year, 1145 less crimes (41% Change) than strategy inception and 867 less crimes (35% Change) than targets agreed.

3.2. The level of NYP Recorded ASB Calls for Service in 2013-14 was 9421 incidents. This was 960 less incidents (9% Change) than the previous year, 3591 less incidents (28% Change) than strategy inception and 2940 less incidents (24% Change) than targets agreed.

3.3. The following CYC indicators are likely to see a reduction in levels in 2013-14 compared to the previous year;

- Abandoned Cars
- Dog Fouling
- Graffiti
- Noise
- Litter

3.4. The following multi-agency indicators are likely to see an increase in levels in 2013-14 compared to the previous year;

- Drug Related Litter
- Fly tipping - Rubbish

3.5. The following multi-agency indicators have seen a reduction in levels in 2013-14 compared to the previous year;

- Police Personal ASB
- Possession of Cannabis
- Alcohol-related-ASB in AEZs
- Crimes of Harassment

3.6. The following multi-agency indicators are likely to see an increase in levels in 2013-14 compared to the previous year;

- Police Environmental ASB
- NYFRS Deliberate Fires
- NYFRS Hoax Calls

3.7. The following multi-agency indicators have seen no change in levels in 2013-14 compared to the previous year.

- Housing ASB complaints Open
- NYP ASB Firework related Issues

3.8. The 6 North Yorkshire Police Officers commenced working as part of the HUB from 1st May. The PC's will be operating out of West Offices between 8.00am and 10.00pm seven days a week. The accommodation project to allow the police network to function from the CCTV and UTMS rooms is now complete.

3.9. Daily operational meetings have now commenced between key agencies, (NYP, Environmental Protection Unit, Housing Services, Community



Enforcement Officers & SYP) to risk assess cases and ensure that the correct agency / agencies are dealing with the issue.

3.10. Daily information from various council and police systems is being provided to the operational meeting and City of York council have employed a developer to make this arrangement technically more efficient.

3.11. The Anti Social Behaviour, Crime and Policing Bill has now come into force, and the information received, is that the powers are likely to come into force from October 14. We are continuing to work on the smooth introduction of this.

### **North Yorkshire Police Incidents With NACL Closure including "Youth"**

WARD_NAME_	Total 2013-14	Population	Total per 1000 Population	Rank of Total	Rank per 1000
Acomb	116	7729	15.0	7	5
Bishopthorpe	4	3802	1.1	21	21
Clifton	207	12017	17.2	4	3
Derwent	6	3540	1.7	20	20
Dringhouses & Woodthorpe	75	10733	7.0	11	13
Fishergate	72	7921	9.1	12	11
Fulford	9	2595	3.5	18	17
Guildhall	303	6676	45.4	2	1
Haxby & Wigginton	55	12468	4.4	13	15
Heslington	4	4122	1.0	21	22
Heworth	139	11743	11.8	6	8
Heworth Without	12	3786	3.2	17	18
Holgate	109	11564	9.4	8	10
Hull Road	329	8269	39.8	1	2
Huntington & New Earswick	103	12089	8.5	10	12
Micklegate	108	10994	9.8	9	9
Osbalwick	46	3149	14.6	15	6
Rural West	49	10286	4.8	14	14
Skelton, Rawcliffe & Clifton Without	166	12160	13.7	5	7
Strensall	28	7862	3.6	16	16
Westfield	234	13690	17.1	3	4
Wheldrake	7	3899	1.8	19	19
Grand Total	2181	181094	12.0		

3.12. A recent piece of work has been completed for Youth support services which attempts to give an indication of locations of youth anti-social behaviour.

#### 4. Acquisitive Crime

4.1. The level of Serious Acquisitive Crime in 2013-14 was 1444 crimes. This was 79 less crimes (5% Change) than the previous year, 554 less crimes (28% Change) than strategy inception and 354 less crimes (20% Change) than targets agreed.

##### All Burglaries by Premise Type 2013

	2013												Running Total
	Jan	Feb	Mar	Apr	May	Jun	Jul	Aug	Sep	Oct	Nov	Dec	
Allotment	4	0	0	3	1	1	0	0	0	1	2	3	15
Business Premise / Commercial	19	12	16	17	14	13	16	23	19	33	14	16	212
Dwelling	31	38	57	58	46	46	67	41	42	55	38	47	566
Education	0	0	2	2	1	1	2	0	3	0	1	1	13
Garage	19	21	14	19	8	8	16	25	20	15	7	16	188
Shed / Outbuilding	10	19	14	14	21	14	14	27	14	23	12	8	190
Unknown	0	0	0	0	0	0	0	0	0	0	0	1	1
Grand Total	83	90	103	113	91	83	115	116	98	127	74	92	1185

##### All Burglaries by Premise Type 2014

	2014												Running Total
	Jan	Feb	Mar	Apr	May	Jun	Jul	Aug	Sep	Oct	Nov	Dec	
Allotment	1	1		4									6
Business Premise / Commercial	28	24	23	14									89
Dwelling	31	21	45	37									134
Education	2	4	1	2									9
Garage	14	9	13	6									42
Shed / Outbuilding	13	8	18	15									54
Unknown	0	0	0	0									0
Grand Total	89	67	100	78									334

4.2. The level of Theft or unauthorised taking of a cycle in 2013-14 was 1010 crimes. This was 279 more crimes (38% Change) than the previous year, 110 less crimes (10% Change) than strategy inception and 2 less crimes (0% Change) than targets agreed.

4.3. The level of cycles stolen from within garages and sheds, based on data available for the last six months, indicates that this issue is reducing.

4.4. The rate of cycle crime continues to be lower than other large cycling cities and the % increases in cycle crime mirror the patterns seen elsewhere. York continues to have lower cycle theft rates than the other cycling cities of Oxford and Cambridge.

4.5. The number of bikes registered on Operation Spoke is approaching the 17000 mark. This does not include the bikes that have been registered through the Hermes/Apollo method. On average 150 bikes per calendar month have been registered for each of the last six months.

4.6. Individuals arrested for cycle theft in 2013 have been analysed and this shows that there were 47 individuals arrested in total, with only 2 individuals arrested more than once. The majority of the arrested

individuals are male (96%) and within the 16 -25 year old age group (74%). There is no geographic pattern to where these individuals live within the city.

**Volume of Cycle Thefts per 1,000 Population**

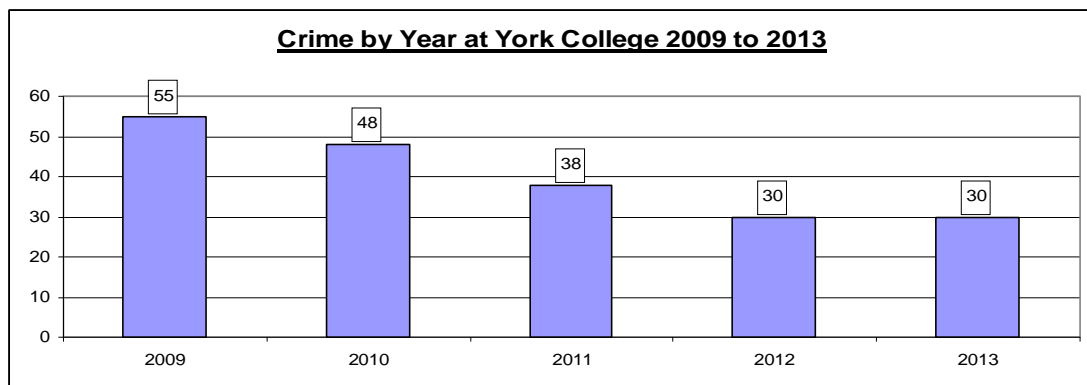
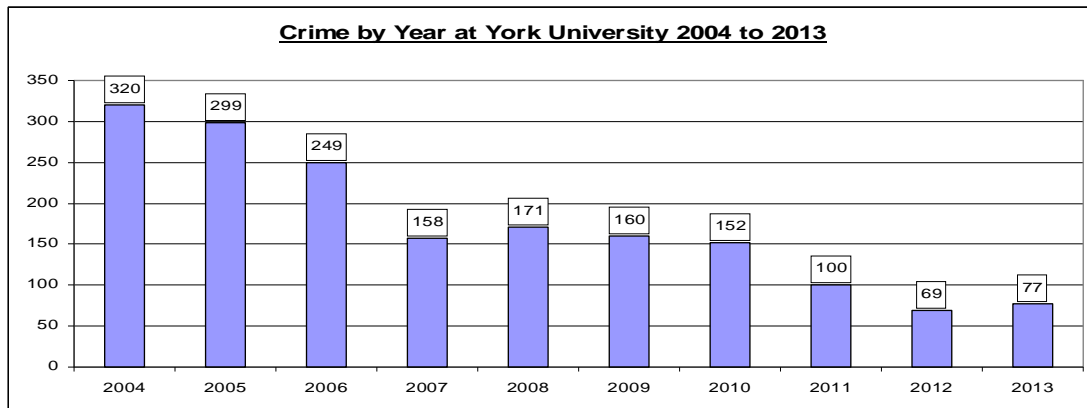
	Nov08-Jan09	Jul09-Sep09	Apr10-Jun 10	Apr11-Jun 11	Apr13-Jun13	Jun13-Aug13	Oct12-Dec12
York	1.41	1.43	1.87	1.30	1.00	1.43	1.50
Cambridge	4.30	5.42	6.72	5.04	4.05	4.61	4.11
Oxford	2.56	3.52	3.67	5.32	3.59	3.65	2.96
Brighton			1.09	1.21	0.97	1.40	0.84
Bristol			1.21	1.15	0.92	1.25	1.02
Exeter			0.95	0.72	1.12	0.96	0.63
Lincoln			1.28	2.41	1.99	1.57	1.84
Manchester			1.40	1.29	0.97	1.04	1.02

**Other Cities Rates Compared to York (i.e. Cambridge is 3.1 times higher in first example)**

	Nov08-Jan09	Jul09-Sep09	Apr10-Jun 10	Apr11-Jun 11	Apr13-Jun13	Jun13-Aug13	Oct13-Dec13
Cambridge	3.1	3.8	3.6	3.9	4.1	3.2	2.7
Oxford	1.8	2.5	2.0	4.1	3.6	2.6	2.0
Brighton			0.6	0.9	1.0	1.0	0.6
Bristol			0.6	0.9	0.9	0.9	0.7
Exeter			0.5	0.6	1.1	0.7	0.4
Lincoln			0.7	1.8	2.0	1.1	1.2
Manchester			0.7	1.0	1.0	0.7	0.7

**4.7. Serious acquisitive crime at the following geographic and thematic areas continues to remain low:**

- York College
- Industrial Estates
- Educational Establishments
- Shopping Parks
- City Centre Car Parks
- Hotels
- York Hospital
- Leisure Facilities

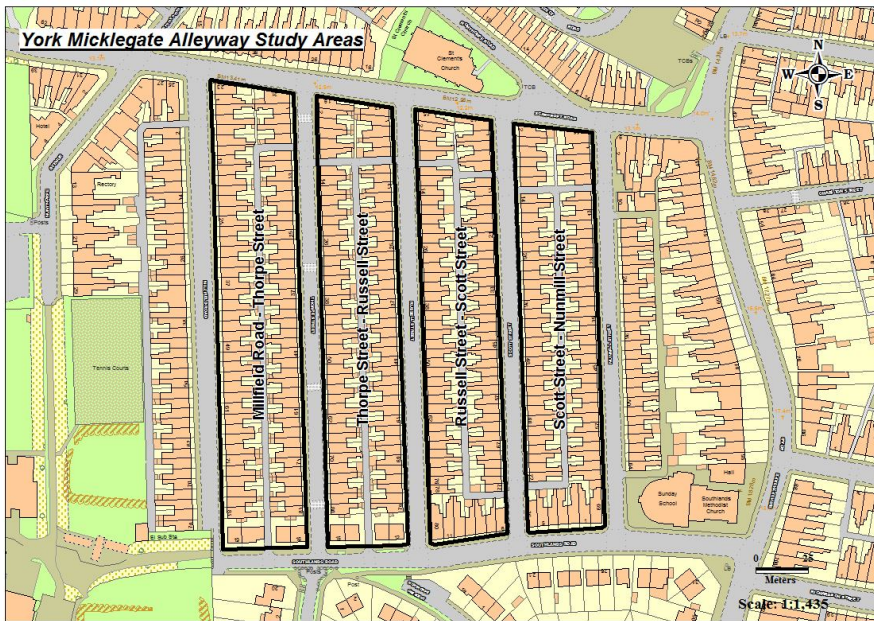


4.8. There were 159 crimes across the Clifton Moor Industrial estate in 2013 which is lower than crime levels in 2012 and 2011. Over half of the crimes recorded are cases of shoplifting.

4.9. Safer York continue to work with the police architectural liaison officer in responding to planning applications which may have an impact on crime and disorder and are providing evidence bases for around 10 applications per month.

4.10. The Micklegate Alleygating scheme went to OIC at the end of May 2014 and it was agreed to formally make the necessary full orders for this scheme and the relevant order to further consult on 1 alleyway. Additionally it is expected informal consultation for the following proposed schemes will take place over the summer:

- Stanley Mews (Guildhall Ward)
- Walworth Street North / Bismarck Street (Holgate Ward)
- Cornlands Road Park (South-west entrance) (Westfield Ward)



4.11. Dependent on the outcomes of the consultations during the summer it is Public Rights of Way's intention is to carry out a further 9 informal consultations for the following schemes.

- Wilton Rise / St Paul's Square (Holgate Ward)
- Baile Hill Terrace / Kyme Street (Micklegate Ward)
- Curzon Terrace Alleyways (2 alleyways) (Micklegate Ward)
- Barbican Streets (3 alleyways) (Fishergate Ward)
- Burnsall Drive (Holgate Ward)
- Brunswick Street / Southbank Avenue (Micklegate Ward)
- Main Street / Second Avenue (Heworth Ward)
- Adelaide Street Alleyways (3 alleyways) (Micklegate Ward)
- Siward Street Alleyways (2 alleyways) (Hull Road Ward)

## 5. Other Information

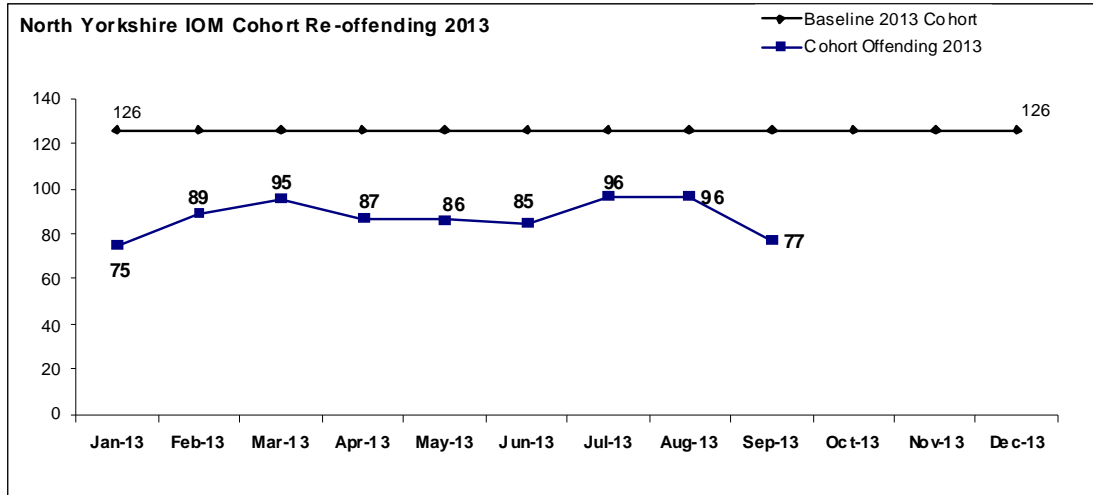
5.1. The level of Hate Crime in 2013-14 was 98 crimes. This were 3 more incidents (3% Change) than the previous year, 71 less incidents (42% Change) than strategy inception and 71 less incidents (42% Change) than targets agreed.

5.2. The pattern of hate crimes reported in 2013/14, has followed a similar trend to previous years where the majority of crimes/ incidents are of a racial nature and that crimes/incidents are spread throughout the city with a small concentration around taxi services and late-night refreshment houses in the city-centre. There are no clusters of incidents outside of this pattern

Ward	Disability	Homophobic	Racial	Religious	Sexual orientation	Transgender	Total
Bishopthorpe			1				1
Clifton	1		7				8
Dringthorpe & Woodthorpe			4				4
Fishergate			6		1		7
Guildhall		2	26	2	1		31
Heslington			1				1
Heworth			8		1		9
Holgate			1		1		2
Hull Road			4				4
Huntington & New Earswick			1	1	1		3
Micklethorpe			14				14
Rural West			3		2		5
Strensall			2	1		2	5
Westfield			4				4
TOTAL	1	2	82	4	7	2	98

TYPE	Apr	May	Jun	Jul	Aug	Sep	Oct	Nov	Dec	Jan	Feb	Mar	Total
Age-related													0
Asylum seeker													0
Disability										1			1
Gender													0
Heterophobic													0
Homophobic					1						1		2
Irish travellers													0
Migrant worker													0
Racial	5	7	7	7	10	2	9	9	12	4	8	2	82
Refugee				1		1							2
Religious									1			1	2
Romany peoples													0
Sexual Orientation	1	1		1		1		2				1	7
Transgender				1			1						2
Vulnerable adult													0
TOTAL	6	8	7	10	11	4	10	11	13	5	9	4	98

5.3. Information has been received from the LCJB “Reducing Reoffending Board” which indicates that all IOM Hubs are performing below their baseline set for the Jan 2013 cohort and therefore achieving target. There was an overall reduction in re-offending within IOM across York and North Yorkshire of 30.68% in the nine months to September 2013.



5.4. The level of Shoplifting in 2013-14 was 1575 crimes. This was 73 more incidents (5% Change) than the previous year, 2 more incidents (0% Change) than strategy inception and 81 more incidents (5% Change) than targets agreed.

5.5. York Business Against Crime (YBAC) goes from strength to strength.



5.6. YBAC now has its own Board of Management, including representatives from the retail sector including the Co-operative group. The Board meet on a monthly basis. All the relevant policies and protocols are now in place and the scheme is due to be assessed by the Association of Business Crime Partnerships (ABCP) in the Autumn.

5.7. We have received very positive feedback from retailers about the new SentrySIS intranet system which allows images of offenders to be shared between stores and with NYP. This is far more effective than the paper target pack it replaced. The system is accessed by NYP SNA and NYP Intelligence Unit in addition to retailers.

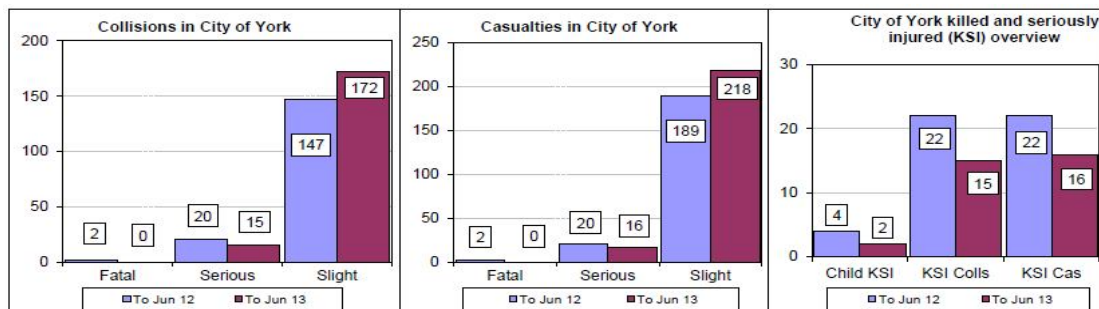
5.8. We are currently holding bi-monthly SentrySIS working group meetings including YBAC BoM members, NYP Intelligence Unit and NYP SNA to iron out any issues with the system and to feedback any development suggestions. These have proved very successful.

5.9. We will shortly be meeting with Business Against Crime in Leeds (BACIL) to discuss how we can access each others' images for information sharing purposes.

5.10. YBAC Exclusion Order meetings are also held on a monthly basis. Exclusion Orders are imposed on those individuals whose offending is 'persistent and prolific': who must be over 18 years of age, have had more than 5 arrests in a 12 month period and have had an arrest in at least 3 out of the previous 6 months.

5.11. We have recently written to the Top 25 most targeted stores who have not signed up to YBAC, informing them of the benefits of the scheme.

5.12. Data available data for crime and Incidents at Ministry of Defense property show that there on average 1 crime and 1 incident recorded per month across their property in the last 12 months.



5.13. Data for the first six months of 2013 suggest that there have been less fatal and serious casualties, but an increase in the number of slight casualties. There were no recorded fatal casualties within the first six months of the year.

### **Report Written by:**

Ian Cunningham, Senior Analyst,  
Tanya Lyon, Crime Reduction Manager,  
Paul Morrison, Neighbourhood Safety Manager,  
Jo Beilby, Domestic Violence